

PRODUCT INFORMATION PACKET



Model No: C256T34DB11A

Catalog No: B199704.00

..25HP..3600RPM.256T.ODP.230/460V.3PH.60HZ.CONT.40C.1.15 S.F..RIGID.....

Open Drip Proof (ODP)



Regal and Leeson are trademarks of Regal Beloit Corporation or one of its affiliated companies.

©2018 Regal Beloit Corporation, All Rights Reserved. MC017097E





Nameplate Specifications

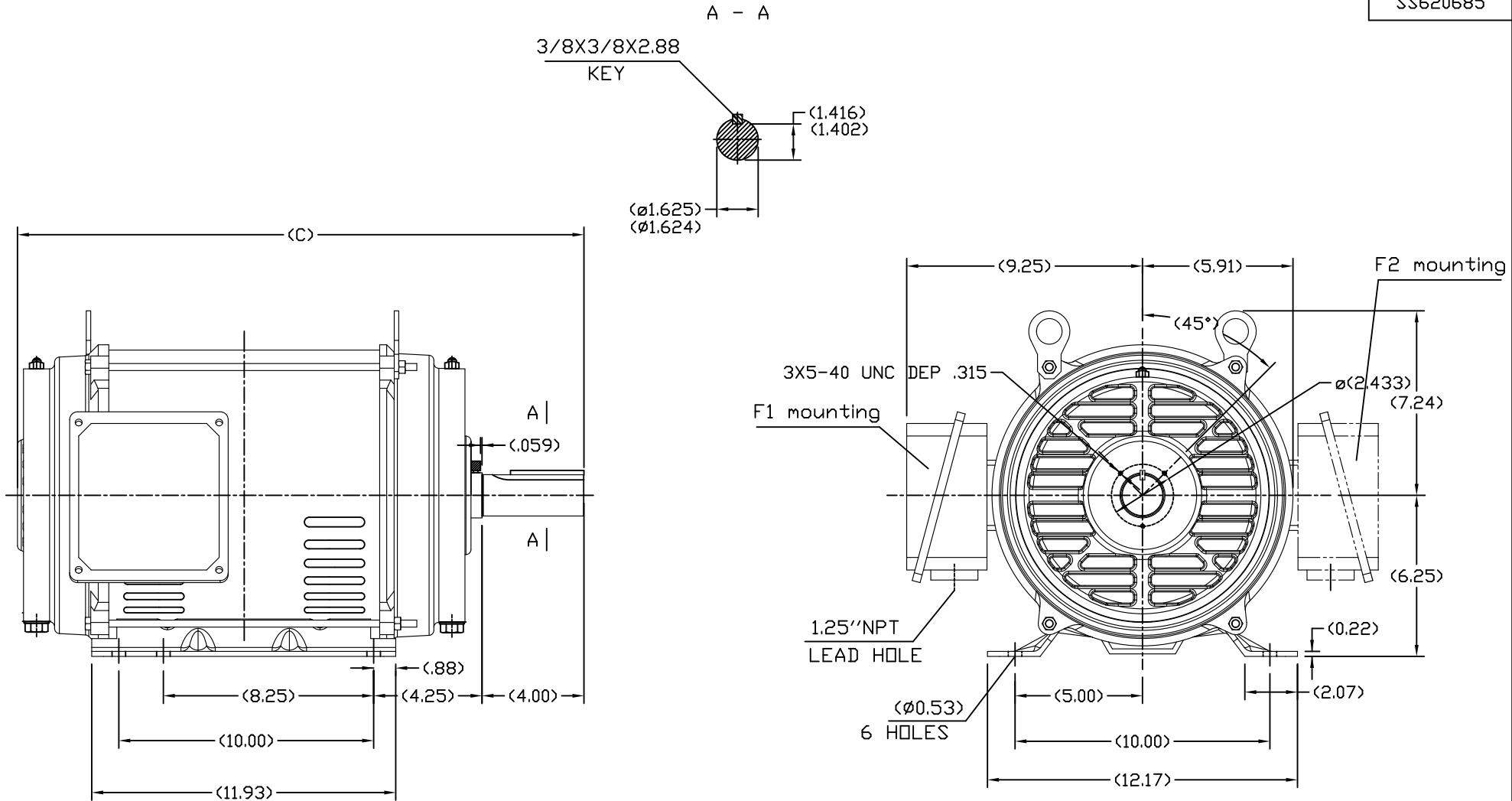
Output HP	25 Hp	Output KW	18.7 kW
Frequency	60 Hz	Voltage	230/460 V
Current	59.5/29.7 A	Speed	3556 rpm
Service Factor	1.15	Phase	3
Efficiency	91.7 %	Duty	Continuous
Insulation Class	F	Design Code	B
KVA Code	G	Frame	256T
Enclosure	Drip Proof	Overload Protector	No
Ambient Temperature	40 °C	Drive End Bearing Size	6209
Opp Drive End Bearing Size	6208	UL	Recognized
CSA	Y	CE	Y
IP Code	12		

Technical Specifications

Electrical Type	Squirrel Cage Inverter Rated	Starting Method	Line Or Inverter
Poles	2	Rotation	Reversible
Mounting	Rigid base	Motor Orientation	HORIZONTAL
Drive End Bearing	BALL	Opp Drive End Bearing	BALL
Frame Material	Rolled Steel	Shaft Type	T
Overall Length	24.22 in	Frame Length	12.20 in
Shaft Diameter	1.625 in	Shaft Extension	4 in
Assembly/Box Mounting	F1/F2 CAPABLE		
Outline Drawing	SS620685-256T	Connection Diagram	EE7308K

Uncontrolled Copy

SS620685



254T	22.64
256T	24.22
FRAME	C

		TOLERANCES UNLESS SPECIFIED		REGAL REGAL-BELOIT CORPORATION		DRAWN	Xiaowei Zhu		
		DEC.	INCHES			CHK			
		.X	±.1	TITLE		APPD			
		.XX	±.03	OUTLINE		SCALE			
		.XXX	±.005	254/256T ODP-ROLLED STEEL		REF			
		.XXXX	±.0005	MAT'L.		FMF	REGAL-VUXI		
NO.	REVISION	BY & DATE	CHK	ANG	±1/2°	FINISH	PREV		
		THIS DRAWING IN DESIGN AND DETAIL IS OUR PROPERTY AND MUST NOT BE USED EXCEPT IN CONNECTION WITH OUR WORK. ALL RIGHTS OF DESIGN AND INVENTION ARE RESERVED. THIS IS AN ELECTRONICALLY GENERATED DOCUMENT - DO NOT SCALE THIS PRINT		RFP	CAD FILE	SS620685	SIZE	DRAWING NO.	REV.
				DIST			B	SS620685	2


LOW VOLTAGE



HIGH VOLTAGE



VIEW OF TERMINAL END

				TOLERANCES UNLESS SPECIFIED		 REGAL - BELOIT CORPORATION	DRAWN PGK 06-04-1997			
NO.	REVISION	BY & DATE	CHK	ANG	±		INCHES	CHK	ML 06-05-1997	
E	CORRECTED IEC MARKINGS	ECO-0111208	WGJ	01-23-2017	EMH	DEC.	±.1	APPD	GK 06-15-1997	
D	RE-DRAWN WITH REGAL LOGO	ECO-0110493	WGJ	09-30-2016	EMH	.XX	±.02	TITLE CONNECTION DIAGRAM		
8	ADDED IEC DESIGNATIONS	MU95020	TJW	4/30/2010	MJS	.XXX	±.005	SCALE		
7	REVISED HIGH VOLTAGE L2 WAS L3	CN52600-354	MRB	09-21-1998		.XXXX	±.0005	REF		
6	REDRAWN ON CADD		PGK	06-05-1997				FMF		
								PREV		
THIS DRAWING IN DESIGN AND DETAIL IS OUR PROPERTY AND MUST NOT BE USED EXCEPT IN CONNECTION WITH OUR WORK ALL RIGHTS OF DESIGN AND INVENTION ARE RESERVED THIS IS AN ELECTRONICALLY GENERATED DOCUMENT - DO NOT SCALE THIS PRINT				RFP	CAD FILE EE7308K			SIZE	DRAWING NO. PAGE OF	REV.
				DIST				A	EE7308K	E



P.O. BOX 8003
WAUSAU, WI 54401-8003
PH. 715-675-3311

DATA VOLTS: 460

CERTIFICATION DATA SHEET

CONN. DIAGRAM: EET7308K
OUTLINE: SS620685
WINDING: HE31602016

CAT #: B199704.00

NONE 2

TYPICAL MOTOR PERFORMANCE DATA

HP	KW	SYNC RPM	FL RPM	FRAME	ENCLOSURE	TYPE	KVA CODE	DESIGN	
25	18.7	3600	3566	266T	DP	TDC	G	B	
PH	HZ	VOLTS	AMPS	START TYPE	DUTY	INSL	S.F.	AMB	ELEV.
3	60/50	230/460#190/380	59.5/29.7&58/29	LINE OR INVERTER	CONT	F	1.15	40	3300
	F.L. EFF	91.7	3/4 LD EFF	92.1	1/2 LD EFF	91.4	GTD EFF		ELECT. TYPE
	F.L. PF	86.0	3/4 LD PF	81.0	1/2 LD PF	70.5	91.0		SO CAGE INVERTED
	F.L. TORQUE	LR AMPS @ 460 V	L.R. TORQUE		B.D. TORQUE		F.L. RISE (°C)		
	37.0 LB-FT	175	70.0 LB-FT	189%	93.0 LB-FT	251%	55		
	PRESSURE @ 3	POWER	ROTOR WK²	MAX. LOAD WK²	SAFE STALL TIME	STARTS/HOUR	MOTOR WGT		
	75 DBA	84 DBA	1.30 LB-FT²	0 LB-FT²	15 SEC.	2	360 LB.		

*** SUPPLEMENTAL INFORMATION ***

DE BRACKET TYPE	ODE BRACKET TYPE	MOUNT TYPE	MOTOR ORIENTATION	SEVERE DUTY	HAZARDOUS LOCATION	DRIIP COVER	SCREENS	PAINT
STANDARD	STANDARD	RIGID	HORIZONTAL	NO	NONE	NO	NONE	BLUE (ENAMEL)
BEARINGS	GREASE	SHAFT TYPE	SPECIAL DE	SPECIAL ODE	SHAFT	MATERIAL	FRAME MATERIAL	
DE BALL 6209	BALL POLYREX EM	T	NONE	NONE	1045 HOT ROLLED (C-204)	ROLLED STEEL		

THERMOSTATS	PROTECTORS	WDG RTD's	BRG RTD's	THERMISTORS	CONTROL	SPACE HEATERS
NONE	NOT	NONE	NONE	NONE	FALSE	NA
R1 (ohms/ph)	R2 (ohms/ph)	X1 (ohms/ph)	X2 (ohms/ph)	Xm (ohms/ph)	VIBRATION (in/sec)	FLOAT
0.295	1111.32	0.898	0.752	22.249	0.080	ODE

* N O T E S		INVERTER TORQUE: VARIABLE 10:1 INV. HP SPEED RANGE: NONE
		ENCODER: NONE
		BRAKE: NONE
		FT-LB: NONE
		VOLTAGE: NA
		UL: Y-(LEESON UL REC)

DATE: 2/1/2018	HZ:
----------------	-----

Date: 2/1/2018

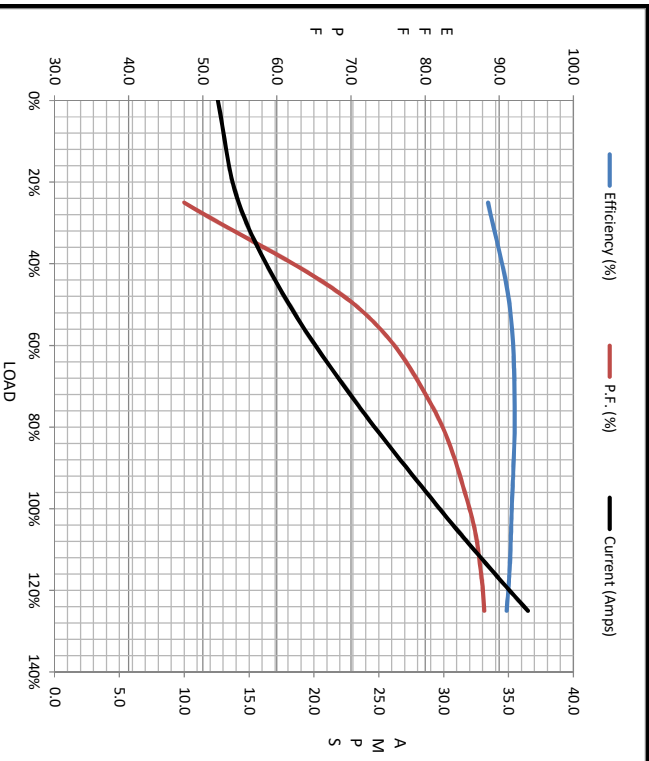
B:199704.00



Data @ 460 V

Motor Load Data								
Load	0%	25%	50%	75%	100%	115%	125%	LR
Current (Amps)	12.6	14.2	18.1	23.5	29.7	33.7	36.5	175
Torque (ft-lb)	0.00	9.2	18.4	27.7	37.0	42.6	46.6	70.0
RPM	3600	3590	3578	3568	3556	3550	3545	0
Efficiency (%)		88.5	91.4	92.1	91.7	91.4	91.0	
P.F. (%)	6.5	47.5	70.5	81.0	86.0	87.5	88.0	40.0

Motor Speed Data						Information Block																					
LR	Pull-Up	BD	Rated	Idle		HP	Sync. RPM	Frame	Enclosure	Construction	Voltage	Frequency	Design	LR Code letter	Service Factor	Temp Rise @ FL	Duty	Ambient	Elevation	Rotor/Shaft wk²	Ref Wdg	Sound Pressure @ 1M	VFD Rating	Outline Dwg	Conn. Diag	Additional Specifications:	
0	1800	3345	3556	3600		25.0	3600	256	DP	TDC	230/460#190/380	60	B	G	1.15	55	CONT	40	1,000	1.30	HE31602016 NONE	75	VARIABLE 10:1	SS620685	EE7308K		
Speed (RPM)	0	1800	3345	3556	3600																						
Current (Amps)	175	156	104	29.7	12.6																						
Torque (ft-lb)	70.0	59.0	93.0	37.0	0.00																						



R1	R2	X1	X2	Xm
0.2950	1111.3200	0.8980	0.7520	22.2490

